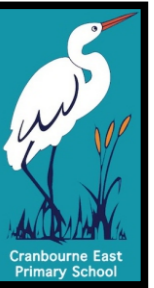


SWPBS Matrix - Cranbourne East Primary School



Relationships



Rigour

All settings

In the classroom

In the yard

In the bathrooms

Using technology

Respect

We use peoples preferred names and pronouns

We use our manners

We take turns

We follow instructions given by school adults

We use property for its correct purpose

We are quiet while others are working

We work independently when directed

We put our hand up and wait our turn to speak

We call out unsafe behaviour

We return borrowed equipment

We line up when instructed

We keep the stalls, floors, mirrors and walls clean

We give each other privacy

We are quiet

We use our own login details

We plug our devices in when finished

We follow the ICT user agreement

Responsibility

We report bullying

We keep our bodies to ourselves

We wear the correct uniform

We put rubbish in the bin

We stay on task

We arrive on time & with the required equipment

We line up, enter one at a time & sit on the floor

We walk inside

We wear hats when instructed

We play in designated areas

We follow playground rules

We wash our hands with soap

We put paper towel in the bin

We wait for our partner

We keep our login details private

We carry our devices with two hands

We only access school approved sites

Resilience

We attempt all tasks

We ask for help when needed

We try again when we make a mistake

We complete our work

We follow the rules of the game

We invite others to join in

We use the toilet during breaks

We ask peers for help before teachers